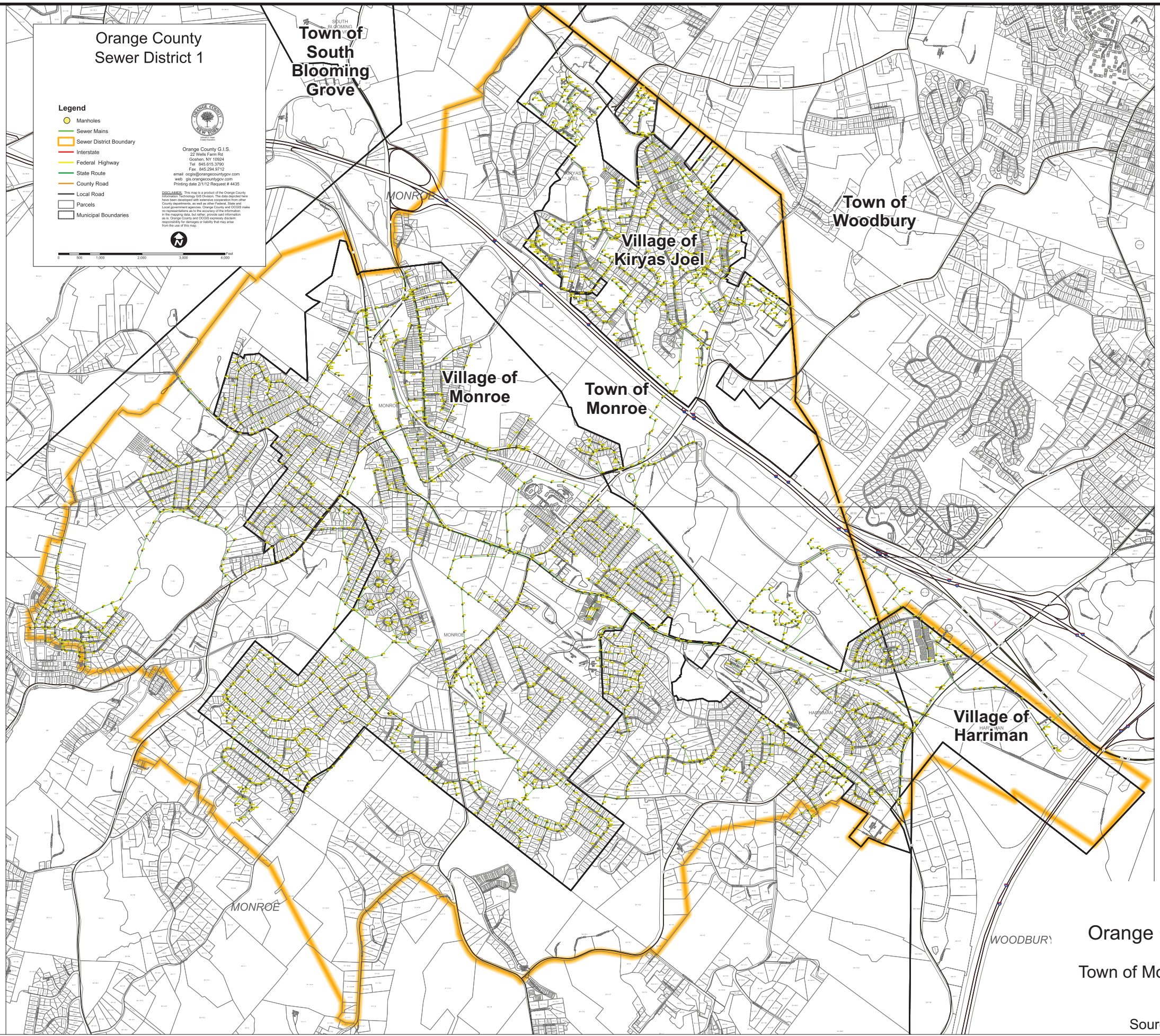


**Figure 3.5-1: Catskill Aqueduct Connection**  
 Kiryas Joel Annexation  
 Town of Monroe and Village of Kiryas Joel  
 Orange County, NY  
 Source: USGS 7.5-minute Topographic Map  
 Scale: Graphic Scale as shown



**Orange County Sewer District 1**

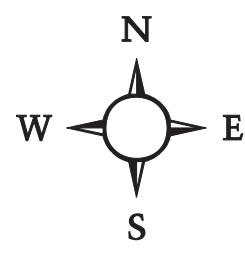
**Legend**

- Manholes
- Sewer Mains
- Sewer District Boundary
- Interstate
- Federal Highway
- State Route
- County Road
- Local Road
- ▭ Parcels
- ▭ Municipal Boundaries

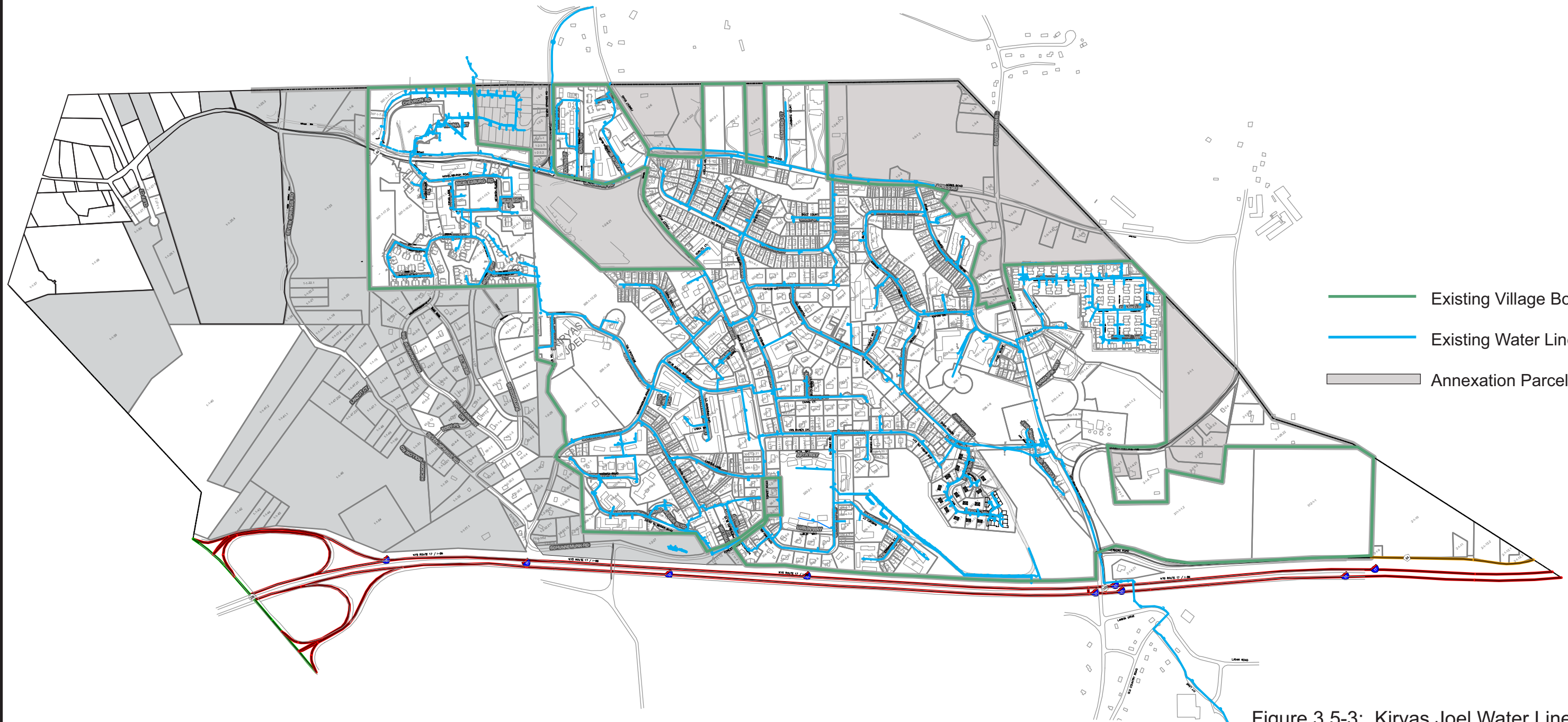
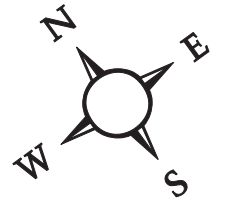
Orange County G.I.S.  
 22 Wells Farm Rd  
 Cortland, NY 13824  
 Tel: 845.615.5790  
 Fax: 845.264.9172  
 email: [gis@orangecounty.gov](mailto:gis@orangecounty.gov)  
 web: [gis.orangecounty.gov](http://gis.orangecounty.gov)  
 Printing date: 2/1/12 Request # 4435

DISCLAIMER: This map is a product of the Orange County Information Technology GIS Division. The data presented here has been developed with various programs for use by other local government agencies. Orange County and OCGIS make no representation as to the accuracy of the information in the mapping data, but neither provides said information with Orange County and OCGIS assumes no responsibility or warranty or liability that may arise from the use of this map.

Scale: 0 500 1,000 2,000 3,000 4,000 Feet

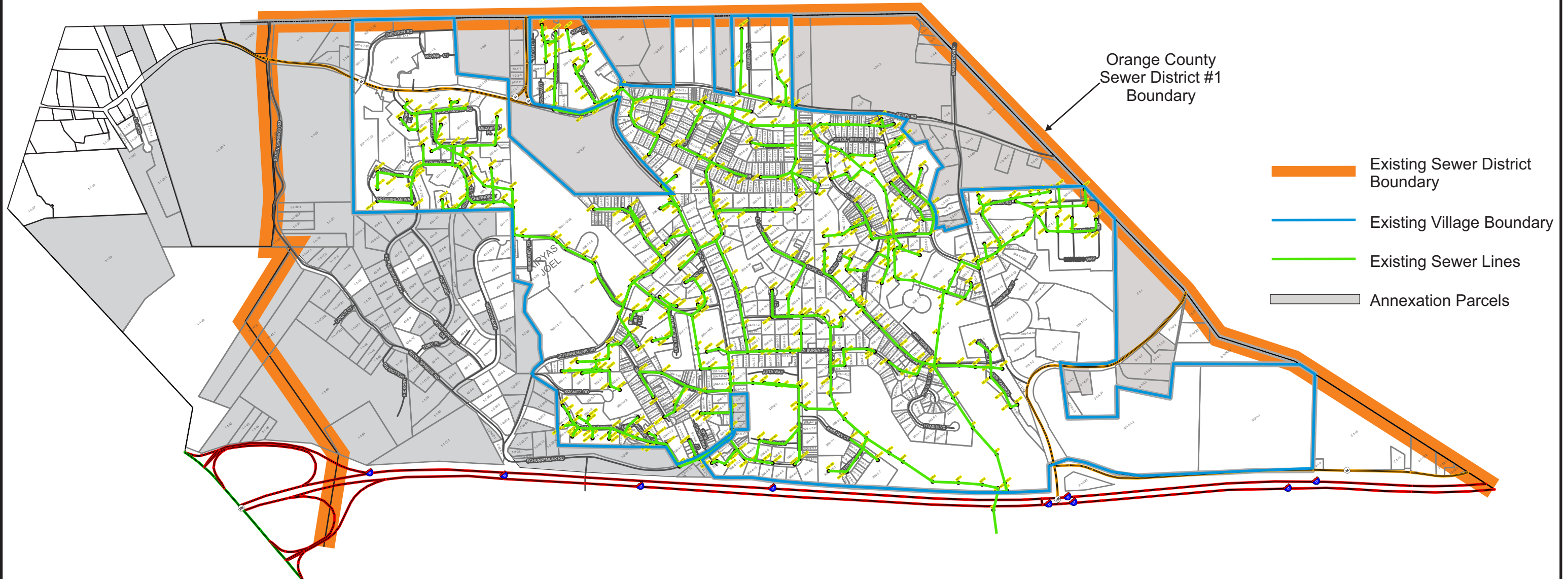
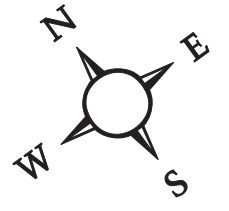


**Figure 3.5-2:**  
**Orange County Sewer District #1**  
**Kiryas Joel Annexation**  
**Town of Monroe & Village of Kiryas Joel**  
**Orange County, NY**  
 Scale: Graphic  
 Source: Orange County G.I.S., 2/01/12



- Existing Village Boundary
- Existing Water Lines
- Annexation Parcels

Figure 3.5-3: Kiryas Joel Water Line Map  
Kiryas Joel Annexation  
Town of Monroe & Village of Kiryas Joel  
Orange County, NY  
Approx. Scale: 1" = 0.2 mi.  
Source: Leggette, Brashears & Graham, Inc., 3/26/15



Orange County  
Sewer District #1  
Boundary

- Existing Sewer District Boundary
- Existing Village Boundary
- Existing Sewer Lines
- Annexation Parcels

Figure 3.5-4: Kiryas Joel Sewer Line Map  
Kiryas Joel Annexation  
Town of Monroe & Village of Kiryas Joel  
Orange County, NY  
Approx. Scale: 1" = 0.2 mi.  
Source: Orange County GIS, Feb. 2012